



Master Fluid
SOLUTIONS™

XYBEX™ Master Blend
Peak Performance Unleashed with Venturi Mixer!



SEAMLESS AUTOMATION
SMART SAVINGS
PRECISION CONCENTRATION



XYBEX™ Master Blend Venturi Coolant Mixer

Optimize Performance: XYBEX™ Master Blend Venturi Coolant Mixer!

- > Built to last with high durability: crafted from billet 6061 Aluminum
- > Chemically resistant surface treatment ensures longevity
- > Versatile mounting options: compatible with both drums and pails
- > Powered by water, eliminating the need for electricity
- > Suited for metalworking fluids, including soluble and semi-synthetic
- > Minimized downtime for increased productivity
- > Ensures precision and consistency in concentration mixtures
- > Enhanced control with a double-lock dial system



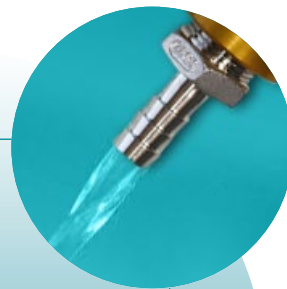
ADJUSTABLE RATIO

Easily set coolant mixing ratios from 1% to 20% with a simple dial turn for versatile applications.



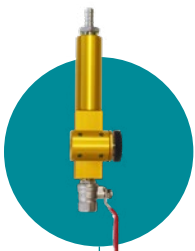
SECURE CONTROL

Integrated double screw lock system on the dial maintains fixed concentration settings, preventing tampering.



SMART MIXING TECHNOLOGY

Specially calibrated spout extension ensures accurate coolant mixing for precise output.



SEAMLESS COMPATIBILITY

Fits both 205L barrels and 20L pails with interchangeable Polypropylene risers, ensuring easy connectivity.



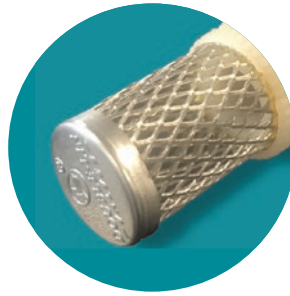
EFFICIENCY OUTPUT

Master Blend optimizes water pressure for high-volume output, with a separate on/off valve tap for control.



VARIABLE DOSAGE

Innovative piston design offers complete control over coolant mixing, from 1% to 20%.



STAINLESS STEEL FILTER

The Master Blend incorporates a specialized stainless steel suction filter, ensuring no harmful particles damage the Venturi system.



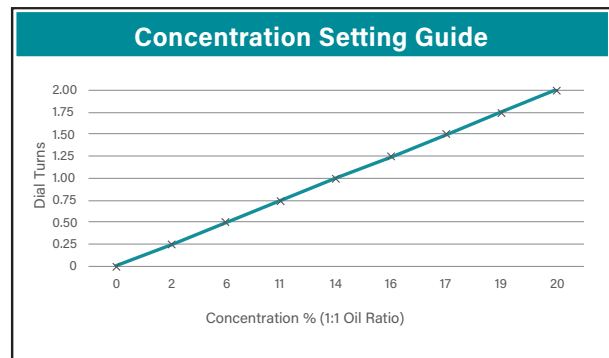
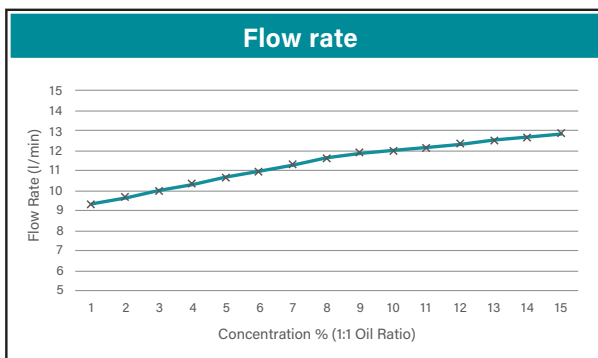
205L BARREL MOUNT

Master Blend 205L Barrel Mounts come in these sizes:
50mm (Included).



Included Items

- > 1x Master Blend Venturi Mixer Body
- > 1x 205L Barrel Mount Adaptor
- > 1x 300mm Polypropylene riser
- > 1x 400mm Polypropylene riser
- > 1x Output Extension Hose
- > Tap Connector and Valve tap
- > User instructions



Technical Data

Dilution Range:
1:100 to 1:5 (1 to 20%)

Connection Size:
3/4" BSP

Housing Material:
6061 Aluminium

Operating Temperature Range:
+/- 25° Celsius

Operating Pressure Range:
30-75 PSI

Description:
40W x 40H x 250L Venturi proportional mixer tap with flow ball valve, stainless filter, poly risers hoses and all fittings.

Contact us

Let Master Fluid Solutions create a detailed, fact-based, customized analysis to prove just how much we can save your operation in time, material, and cost, while improving quality with the optimal fluid or fluid management solutions that are just right for your production.



For prices or additional information, contact your Master Fluid Solutions Representative.



www.masterfluids.com/ap/en-ap/

Specifications may change without notice in the interest of product improvements.

© 2021 Master Fluid Solutions Corporation. TRIM™, XYBEX™, ChipOut™, and PurifierPlus™ are trademarks of Master Chemical Corporation d/b/a Master Fluid Solutions. 2024-03-20