



Master Fluid
SOLUTIONS™

USER MANUAL

XYBEX™ Automix Master

Automated Cutting Fluid
Mixing System



TABLE OF CONTENTS

Specification and Appearance	03
Installation & Setting	04
How to Assemble the Connector	05
Reference Image for Piping Installation 1	06
Recommended Plumbing Work Images	08
Manual for Automatic Operation	09
Manual Operation.	10
Concentration Settings Manual	11
Data Logging Manual	12
Data Settings Manual	13
Alarm Message Manual	14
Manufacturer's Warranty Card	15



XYBEX™ Automix Master

Automated Cutting Fluid Mixing System

SPECIFICATION AND APPEARANCE



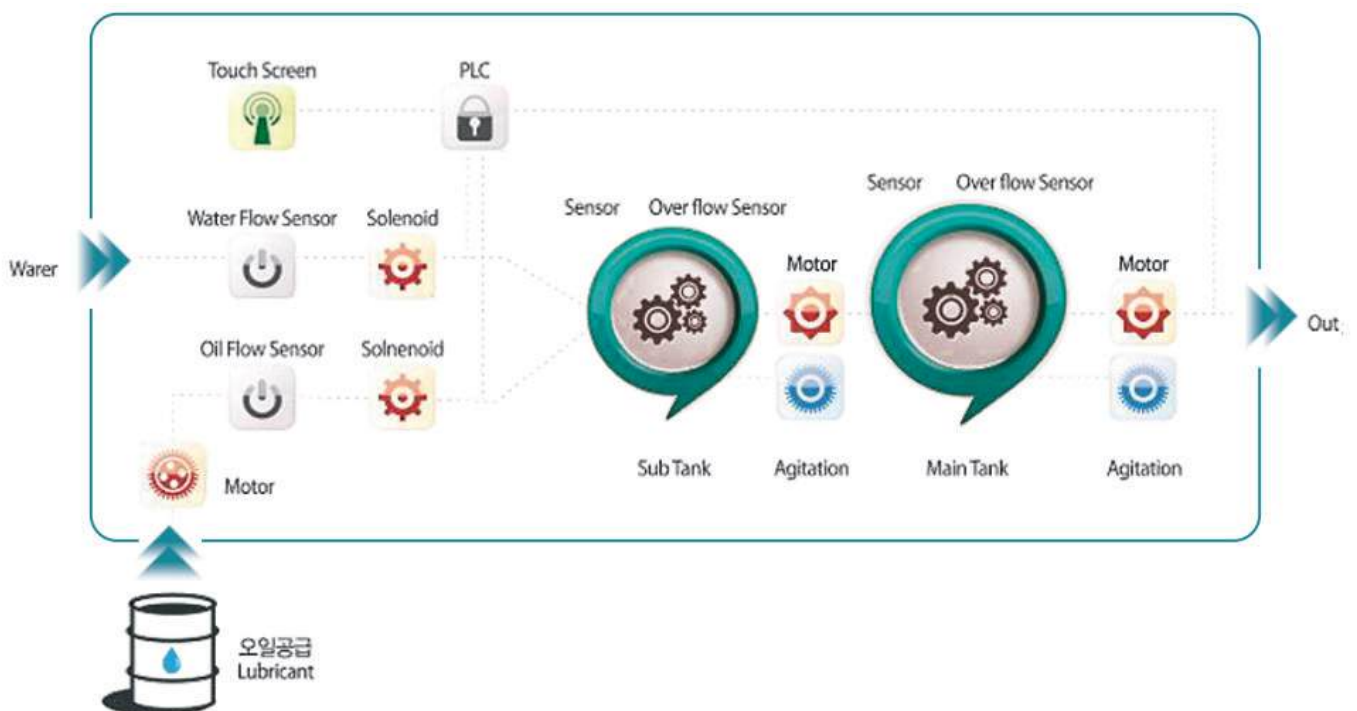
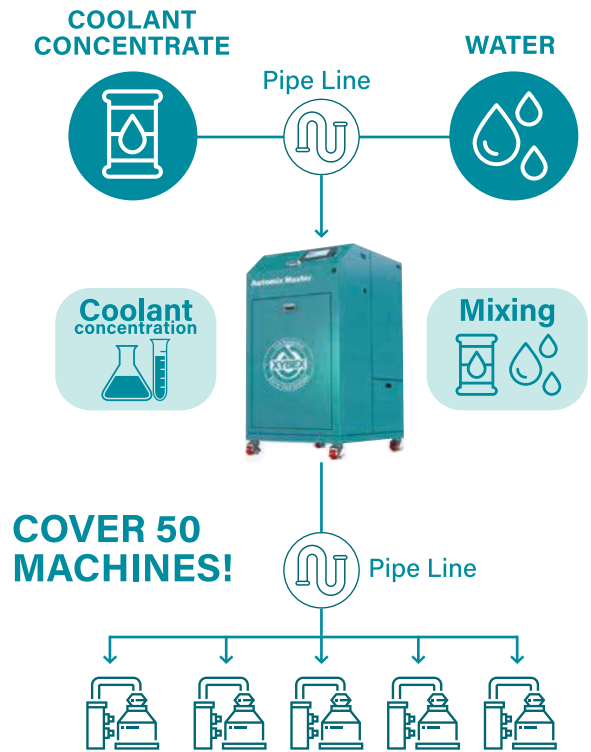
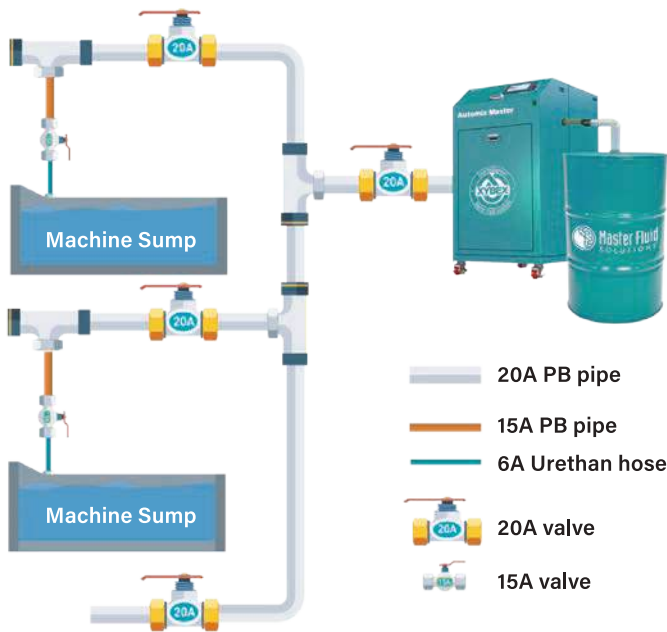
SPECIFICATION			
Dimensions	650mm(W) x 950mm(L) x 1150mm(H)		
Weight	180kg	Power	230V/50Hz
Power consumption	480 w/h max.	Max. production (daily)	14,400 liters
Discharge volume (LPM)	10 liters	Range of discharge (total head of 5m)	100m
Capacity of auxiliary tank	50 liters	Capacity of main tank	182 Liters
No. of sets covered	50 sets	Agitation method	Double Stirring with Submerged Motor
Range of concentration adjustment	0.1% ~ 99.5%	Tolerance	0.1% max.



XYBEX™ Automix Master

Automated Cutting Fluid Mixing System

INSTALLATION & SETTING





XYBEX™ Automix Master

Automated Cutting Fluid Mixing System

HOW TO ASSEMBLE THE CONNECTOR



01

Loosen the connector cap until it can be inserted into the pipe.



02

Insert the SUS sleeve into the pipe.



03

Insert the pipe all the way into the connector (check insertion depth).



04

Tighten the connector cap all the way by hand. (No use of tools)



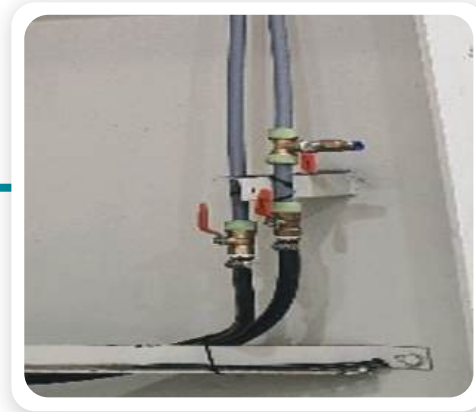
XYBEX™ Automix Master

Automated Cutting Fluid Mixing System

REFERENCE IMAGE FOR PIPING INSTALLATION 1



01 Install the coolant mixer in position.



02 Install the primary piping as shown in the photo.



03 Image connecting the PB piping



04 Image of elbow connected to the end of PB pipe



05 Image of a heterogeneous faucet connecting from the PB (Main-Pipe) to the equipment connected to the urethane hose (12A)



05 Image of connecting ball valve to urethane hose (12A) and connecting ball top to processing equipment



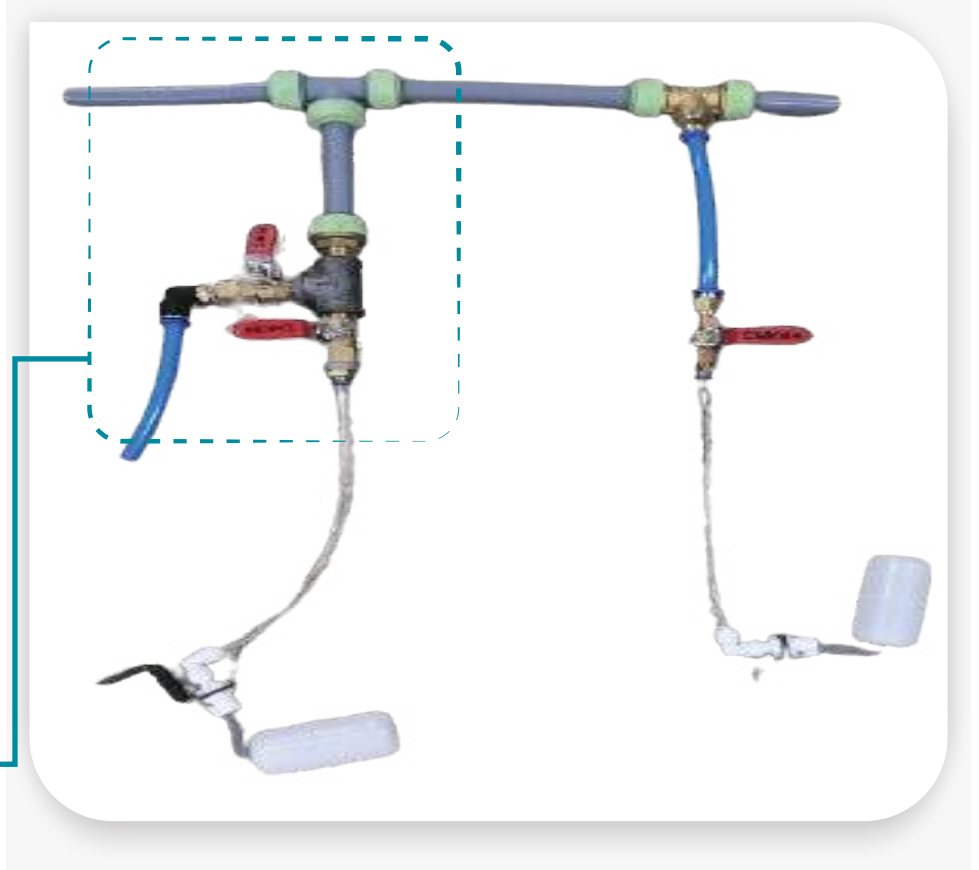
XYBEX™ Automix Master Automated Cutting Fluid Mixing System

RECOMMENDED PLUMBING WORK IMAGES



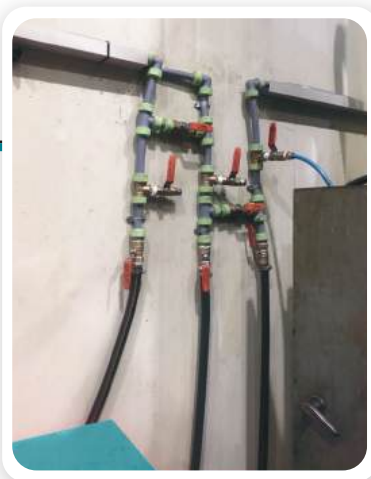
Applies when the processing equipment is located on the side

Applies when the processing equipment is located outside the side



※ Approximately 10 out of 100 pieces of processing equipment have piping installed in the above making it easy to replace and clean cutting oil.

BY-PASS IMAGE OF 3 PIECES OF EQUIPMENT

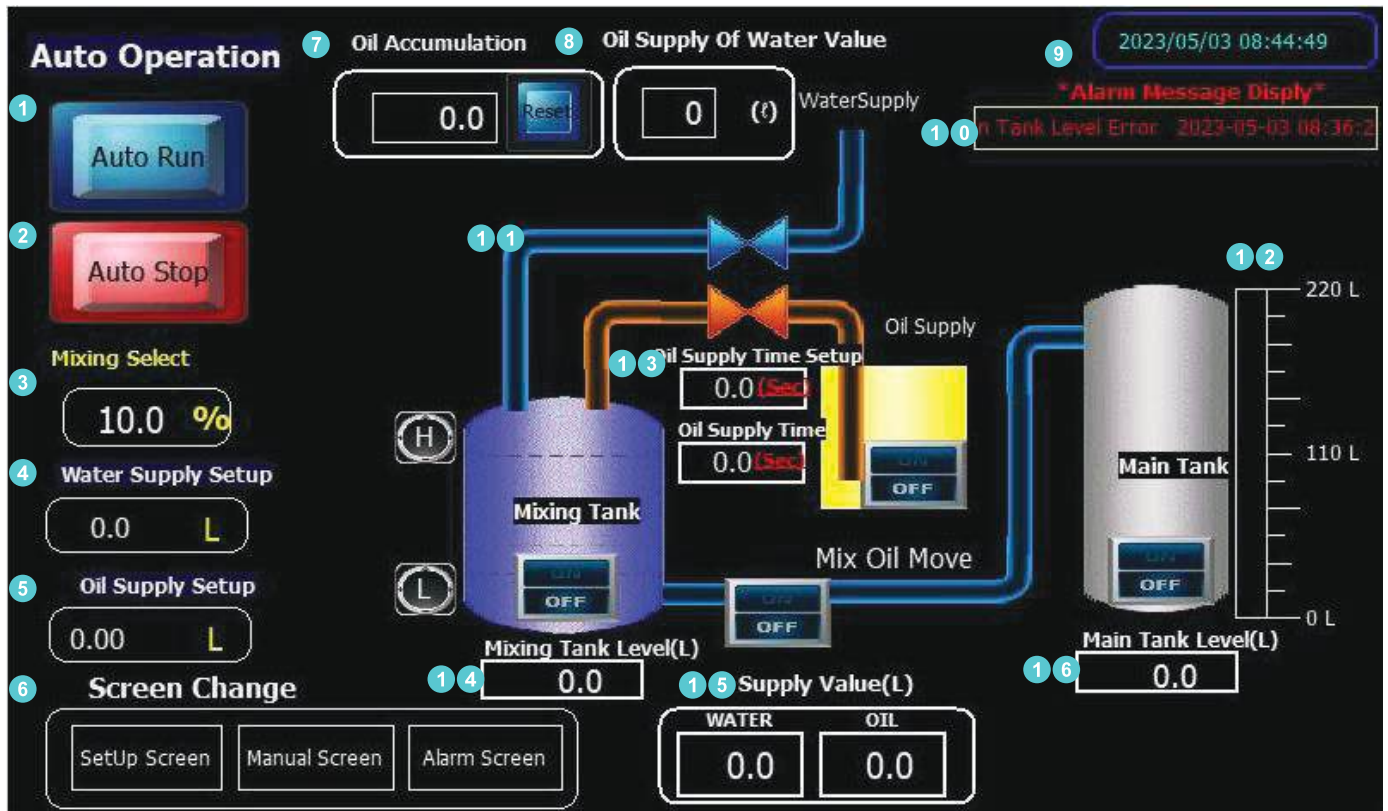




XYBEX™ Automix Master

Automated Cutting Fluid Mixing System

MANUAL FOR AUTOMATIC OPERATION



- 01** Press to start automatic operation
- 02** Used to change or stop the concentration
- 03** Shows the predetermined mixed oil concentration
- 04** Indicate the weight of water according to the set concentration
- 05** Indicate the weight of the mixed oil according to the set concentration
- 06** Switch screen button
- 07** Indication of the accumulated amount of crude oil used
- 08** Set the weight of the water before the mixed oil is injected (changeable by touch)
- 09** Display the current date and time
- 10** Display error messages
- 11** Shows all progress, including mixing, stirring, replenishing and transferring
- 12** Displays the amount of main tank mixed oil
- 13** Setting the supply time of mixed oil and displaying the completion time of replenishment
- 14** Sub-tank level indication
- 15** Indication of the input of water and oil according to the set concentration
- 16** Indication of the amount of mixed oil in the main tank

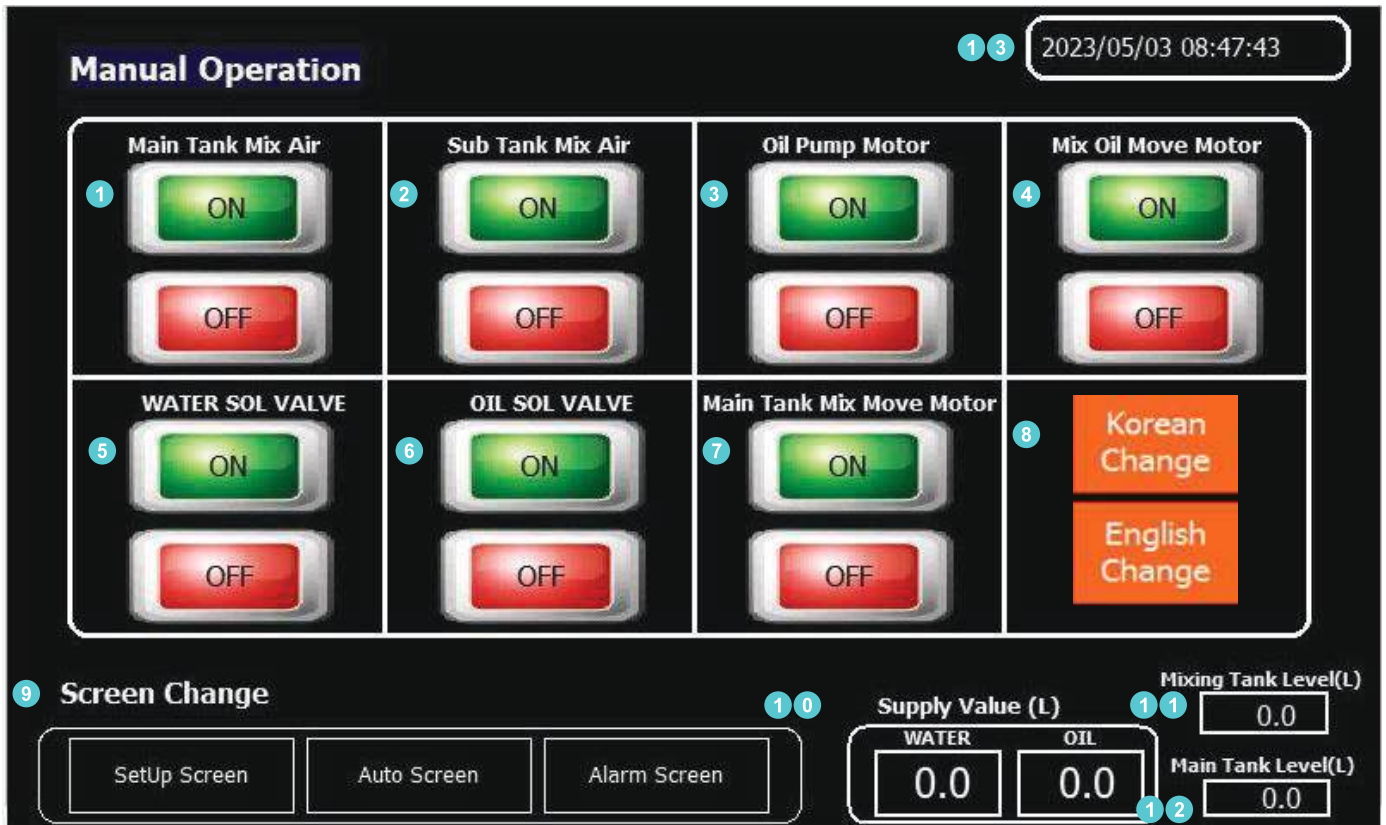
* Remove debris from the tank at least once a month Clean the pipe at least once every two to three months
 * Tip- switch to manual screen to empty mixed oil from main and sub tanks and remove debris



XYBEX™ Automix Master

Automated Cutting Fluid Mixing System

MANUAL OPERATION



01 Main tank air stir motor ON, OFF button

02 Sub tank air stir motor ON, OFF button

03 Oil pump ON, OFF button

04 Transfer pump ON, OFF button(used when transferring from sub tank to main tank)

05 Water sol valve ON, OFF button

06 Oil sol valve ON, OFF button (at the same time with the **03** button)

07 Exhaust pump ON, OFF button(used when discharging to machining equipment)

08 Change Korean and English buttons

09 Switch screen button

10 Indication of the input of water and oil according to the set concentration

11 Indication of the amount of mixed oil in the sub tank

12 Indication of the amount of mixed oil in the main tank

13 Displays the current date and time



XYBEX™ Automix Master

Automated Cutting Fluid Mixing System

CONCENTRATION SETTINGS MANUAL

2023/05/03 08:58:58

Mixing Ratio

1 **Mixing Select**

10.0 %

2 ↑ ↓

3 Register

7

Mixing	Ratio	Mixing	Ratio	Mixing	Ratio
1.0%	100.0 : 1	8.5%	11.8 : 1	16.0%	6.25 : 1
1.5%	66.7 : 1	9.0%	11.1 : 1	16.5%	6.06 : 1
2.0%	50.0 : 1	9.5%	10.5 : 1	17.0%	5.88 : 1
2.5%	40.0 : 1	10.0%	10.0 : 1	17.5%	5.71 : 1
3.0%	33.3 : 1	10.5%	9.52 : 1	18.0%	5.56 : 1
3.5%	28.6 : 1	11.0%	9.09 : 1	18.5%	5.41 : 1
4.0%	25.0 : 1	11.5%	8.70 : 1	19.0%	5.26 : 1
4.5%	22.2 : 1	12.0%	8.33 : 1	19.5%	5.13 : 1
5.0%	20.0 : 1	12.5%	8.00 : 1	20.0%	5.00 : 1
5.5%	18.2 : 1	13.0%	7.69 : 1		
6.0%	16.7 : 1	13.5%	7.41 : 1		
6.5%	15.4 : 1	14.0%	7.14 : 1		
7.0%	14.3 : 1	14.5%	6.90 : 1		
7.5%	13.3 : 1	15.0%	6.67 : 1		
8.0%	12.5 : 1	15.5%	6.45 : 1		

4 **Screen Change**

Auto Screen
Manual Screen
Alarm Screen

5 Data Log Screen

6 Setup Screen

- 01** Display the set concentration

02 Concentration control button (0.1%)
- 03** Set concentration storage button (press until the green light is illuminated)

04 Switch screen button
- 05** Switch to data logging screen button

06 Switch to setup screen button (set-up required when changing the type of oil in the cutting oil)
- 07** Table of the dilution ratio of cutting oil



XYBEX™ Automix Master

Automated Cutting Fluid Mixing System

DATA LOGGING MANUAL

1 데이터 로깅 관리

No	Date	Time	Oil	Water	Radio	Mixing
2345	2018-10-18	11:54:23	12345	12345	12345	12345
2345	2018-10-18	11:54:23	12345	12345	12345	12345
2345	2018-10-18	11:54:23	12345	12345	12345	12345
2345	2018-10-18	11:54:23	12345	12345	12345	12345
2345	2018-10-18	11:54:23	12345	12345	12345	12345
2345	2018-10-18	11:54:23	12345	12345	12345	12345
2345	2018-10-18	11:54:23	12345	12345	12345	12345
2345	2018-10-18	11:54:23	12345	12345	12345	12345
2345	2018-10-18	11:54:23	12345	12345	12345	12345
2345	2018-10-18	11:54:23	12345	12345	12345	12345
2345	2018-10-18	11:54:23	12345	12345	12345	12345
2345	2018-10-18	11:54:23	12345	12345	12345	12345
2345	2018-10-18	11:54:23	12345	12345	12345	12345
2345	2018-10-18	11:54:23	12345	12345	12345	12345
2345	2018-10-18	11:54:23	12345	12345	12345	12345

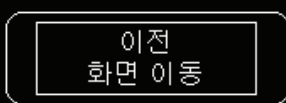
2 로깅 데이터 상승



로깅 데이터 하강



3 화면 전환



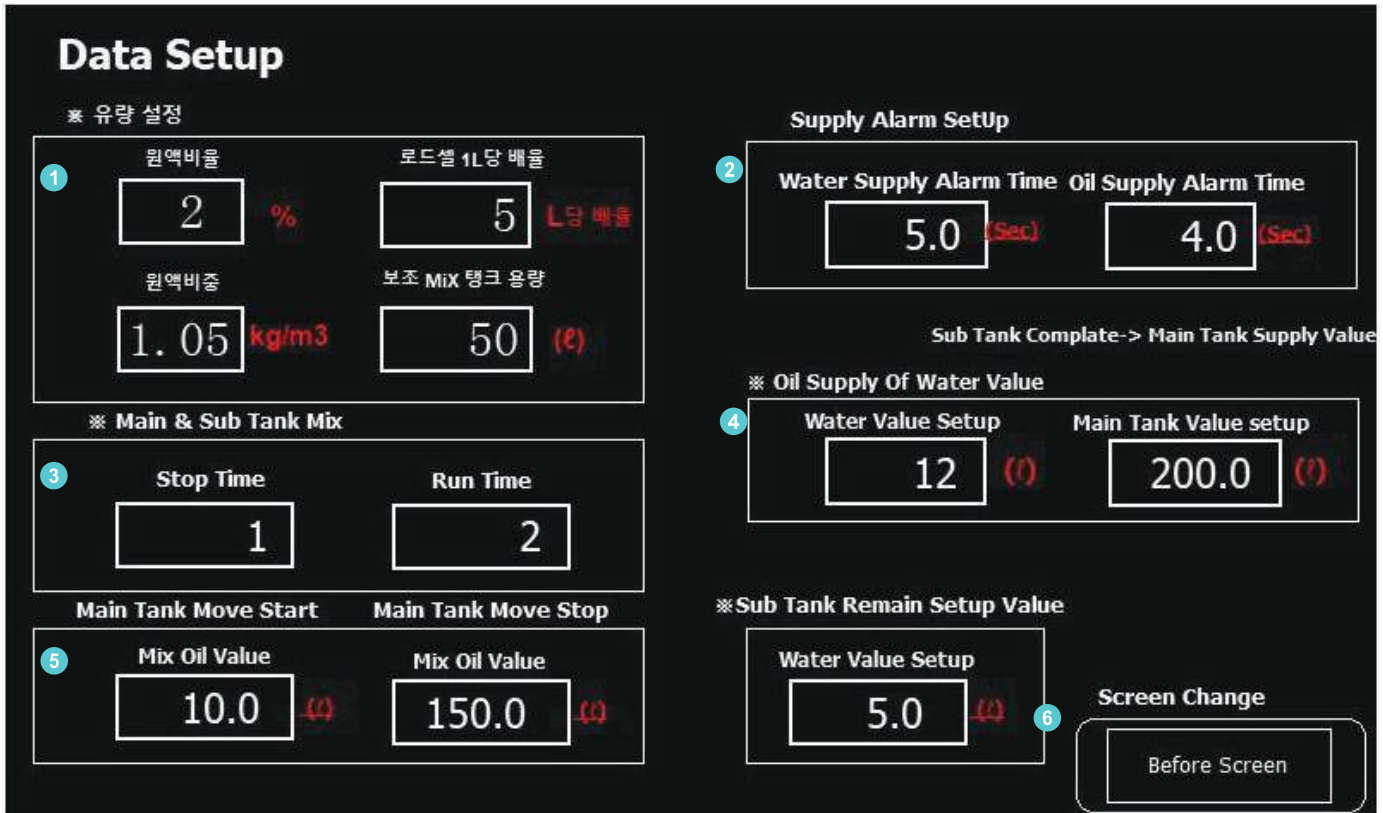
- 01** Display data logging
(Record the date, time, amount of cutting oil, amount of water, concentration, etc. that occurred in the sub tank)
- 02** Arrows for raising and lowering data logging screen pages
- 03** Switch screen button



XYBEX™ Automix Master

Automated Cutting Fluid Mixing System

DATA SETTINGS MANUAL



Adjust data settings screen

- 01** Sets the amount of cutting oil
** Setting the brix of cutting oil * Set percentage per liter of load cell * Setting the specific gravity of cutting oil undiluted solution * Sub tank capacity setting*
- 02** Supply alarm settings
** Set the water supply alarm time (alarm operation when the specified time is exceeded) * Set cutting oil supply alarm time*
- 03** Time setting for main and sub tank stirring motors
** Set stirring time after main tank 1 minute (fixed) * Set stirring time after injection of sub tank (water+cutting oil)*
- 04** Sub tank mixed oil level setting
** Main tank mixed oil level setting*
- 05** Setting the amount of water before injection of cutting oil
** Setting the amount of cutting oil when the discharge of the main tank is stopped*
- 06** Switch screen button

** Don't manipulate the red letter menu above*

Reset when changing the oil type of cutting oil



XYBEX™ Automix Master

Automated Cutting Fluid Mixing System

MANUFACTURER'S WARRANTY CARD

Product name: XYBEX™ Automix Master

Model: Automix Master

Serial No.: _____

Quantity: _____ Set

Warranty period: _____ year _____ month _____ date

▪ **Manufacturer's guarantees:**

For units purchased from the official dealers of XYBEX that are naturally found with defects or with replacement requirements, will be able to apply for the free parts delivery and are requested for approval from either the dealers or the head branch of XYBEX.

▪ **Warranty period:**

12 months warranty starting from the date of receipt.

▪ **Warranty coverage:**

For newly purchased units that are within the warranty period will be provided with services of maintenance or replacement once approved and confirmed to be naturally defected or damaged.

User Info

Company name: _____

Applicant: _____

Phone: _____

Fax: _____

Address: _____

Machine Serial No.: _____

Date: _____